



AMRITA

MEDICAL SOLUTIONS

Embracing the World
With Technology



THE AMRITA EDGE.®

Many hospitals have experienced tremendous challenges and in some cases failures with the implementation of an HIS or EHR system. Often this is the result of an implementation plan that is focused on a piece of software such as the EHR but not a solution.

Amrita HIS, while based upon a robust software application, is deployed as a full solution. This solution starts with a **comprehensive work flow analysis** using principles from LEAN, SIX SIGMA, and PDSA cycles. This informs both our implementation team as well as our client on work flows that can benefit from modification and improvement, and work flows that are currently efficient. Collectively, this data is the framework upon which we will develop the implementation plan and the proper customization. Additionally, this process provides us with the necessary information to understand how the system should be configured and set up. Unlike other vendors we do not leave you on your own to build the many tables and files such as laboratory LOINC codes, charge masters, formularies, order sets etc. Rather, the Amrita team assumes primary ownership of this time consuming task.

Our implementation and solution don't stop at the "Go Live" milestone. We continue by providing Meaningful Use attestation support, HIPAA ongoing security risk analyses, quality improvement, and periodic optimization review. These services and solutions are known as the Amrita Edge and are included as part of your annual support/maintenance fee.



EHR (CEHRT)

The Amrita HIS was developed around its core clinical Electronic Health Record (EHR). Rather than being an “add on” module to a legacy ADT/Billing system, the EHR is the core of the entire software suite. Amrita HIS provides physicians, and other clinicians with a real-time view of their patient’s medical record, including all diagnostic studies and historical notes. Nurses and other caregivers can easily chart vitals and repetitive data, as well as define and access care plans.

- Caregivers can point and click to select data from predefined lists, enter data manually using online forms and templates, or enter via transcription.
- Scanning is available for uploading documents to patient records.
- Order entry includes decision support and patient safety alerts.
- Granular “Permissions” based access to patient records, controls and protects data access.
- Integrated document management for medical records simplifies management reporting.

The EHR is constantly evolving and improving on the way it integrates and supports clinical workflows. For example, our nursing dashboard allows an easy reference point to see the status of patient orders and results that can be displayed on a TV monitor at the nurses station, lab, radiology, pharmacy, and other areas.

ONC 2015 Edition Certified EHR

This Health IT module(s) is 2015 Edition compliant and has been certified by an ONC-ACB in accordance with the applicable certification criteria adopted by the Secretary of the U.S. Department of Health and Human Services. This certification does not represent an endorsement by the U.S. Department of Health and Human Services.

Amrita Hospital Information System AHIS 7.0

Holds Certificate No: 15.04.04.2678.Amri.AH.00.1.171212 Date Certified: 12/12/2017 Effective Date: 2015 Edition

Modules Tested: 170.315 (a)(1-15); (b)(1-9); (c)(1-3); (d)(1-9); (e)(1-3); (f)(1-3, 6,7); (g)(2-9); (h)(1)Clinical Quality Measures tested: 9v4; 26v3; 30v5; 31v4; 32v5; 53v4; 55v4; 60v4; 71v5; 72v4; 73v4; 91v5; 100v4; 102v4; 104v4; 105v4; 107v4; 108v4; 109v4; 110v4; 111v4; 113v4; 114v4; 171v5; 172v5; 178v5; 185v4; 188v5; 190v4

Additional Software used: NewCropRx, DataMotion Direct, MaxMD Direct mdEmail

The full costs and limitations disclosure is available at: <http://www.amritamedical.com/2015DisclosureStatement.html>

ONC 2014 Edition Certified EHR

This Complete EHR is 2014 Edition compliant and has been certified by an ONC-ACB in accordance with the applicable certification criteria adopted by the Secretary of the U.S. Department of Health and Human Services. This certification does not represent an endorsement by the U.S. Department of Health and Human Services.

Amrita Hospital Information System 6.1 Complete EHR Inpatient

Holds Certificate No. 10092014-2853-6 Date Certified: 10/09/2014

Modules Tested: 170.314 (a)(1-17); (b)(1-7); (c)(1-3); (d)(1-8); (e)(1); (f)(1-4); (g)(2-4)

Clinical Quality Measures tested: 9v2; 26v1; 30v3; 31v2; 32v3; 53v2; 55v2; 60v2; 71v3; 72v2; 73v2; 91v3; 100v2; 102v2; 104v2; 105v2; 107v2; 108v2; 109v2; 110v2; 111v2; 113v2; 114v2; 171v3; 172v3; 178v3; 185v2; 188v3; 190v2

Additional Software used: ExitCare, MaxMD Direct mdEmail®

The full costs and limitations disclosure is available at <http://www.amritamedical.com/2014DisclosureStatement.html>

FINANCE AND REVENUE CYCLE

Amrita HIS has a complete billing and revenue cycle management module, currently designed for Critical Access Hospitals. Like our other modules, billing and revenue share a common database and software platform with the core clinical application.

This module is uniquely developed to provide a robust rules-based engine that can accommodate and automate the complex process of third-party payer billing. Additionally, the system provides multiple viewing options for a patient account. This module supports Rural Health Clinic billing, Provider-based clinic and Method II billing, outpatient hospital services as well as inpatient billing. Additionally, Amrita works closely with Infinedi.net to provide robust clearinghouse services and solutions.

Amrita HIS generates both paper transactions as well as EDI.

A complete General Ledger, Accounts Payable and Accounts Receivable functionality is included. Optional XML based export of data to interface to your General Ledger.



RURAL AND CRITICAL ACCESS HOSPITAL REVENUE CYCLE MANAGEMENT

The Amrita HIS revenue cycle solutions are comprehensive and flexible. Recognizing that Rural & CAH's have perhaps the most complex Medicare billing environment, Amrita HIS set out to develop a rules based engine that can accommodate any billing rule or scenario.

Amrita HIS has been field tested at a CAH that has all of these options and emerged fully capable of meeting your needs.

Amrita HIS can provide claims and statement generation for:

- Rural & CAH inpatient and outpatient service lines
- Provider Based clinics using Method II
- Provider based RHCs
- Free standing RHCs

All of these billing options co-exist within a single database and Accounts Receivable system.

The flexibility inherent in this will support future value based and alternative payment models as these become adopted in 2019 for Part B billing, and ACO payment methods.



ADT

Amrita HIS provides a comprehensive ADT and patient registration module that fully integrates with all other system functions. Patient identification cards, bar code wrist bands and chart headers ensure patient safety and enable patient tracking. Patients are managed through a unique master patient identifier and subsequent visit or encounter codes. The registration system interfaces to the Amrita enterprise scheduler for complete patient care management as well as sophisticated bed and census management.



PHARMACY MANAGEMENT

Pharmacy Management is integrated into Amrita HIS, supporting electronic work flows from the point of receiving and inventorying medications through administration and reconciliation. The pharmacy module interfaces with automated dispensing devices as well as barcode assisted devices. Pharmacists have real-time access to the entire patient EHR and can reconcile, verify, and edit orders with minimal mouse clicks. We support integration to facilities with a 340B pharmacy with a bilateral interface sending ADT information from our system and receiving charge and revenue data back.

THE PHARMACY MODULE INTERFACES COMPLETELY WITH ALL OTHER AMRITA HIS SYSTEMS. SOME FEATURES INCLUDE:

- BILLING AND CHARGE CAPTURE
- EXTENSIVE REPORTING
- INTERFACES WITH BAR CODING DEVICES
- TRACKING OF EXPIRING DRUGS
- COST SAVINGS THROUGH ACCURATE TRACKING AND USAGE OF INVENTORY
- INTERFACES TO DISPENSING SYSTEMS AND ROBOTS



	IssuedQty	
ical ointme	1.0	45
sh 0.9% injec	150.0	4242
ss topical cream	1.0	5715^01
er for reconstitu	25.0	5222^50
l tablet	50.0	4247
capsule	20.0	51
g oral t	33.0	

LABORATORY INFORMATION SYSTEMS

The Amrita HIS includes a sophisticated Laboratory Information System (LIS). The system is capable of multiple analyzer interfaces and can receive orders electronically, either from within Amrita HIS or externally via an HL7 interface. Results are integrated into the patient EHR, and can also be sent to the ordering physician/entity via HL7, fax, printed form or email LIS manages all parts of the workflow, such as specimen bar-coding, order processing, result verification and reporting.



SPECIFIC FEATURES INCLUDE:

- Test definitions and integration to the charge master as well as use of multiple code sets
- User definable reference ranges
- Specimen management and electronic accession coding
- Bar coding of specimens
- Electronic order entry from within the Amrita HIS as well as externally through an HL7 interface
- Interfaces with external reference labs like Quest
- Support for all lab testing including microbiology
- Reporting including easy to build user reports

RADIOLOGY INFORMATION SYSTEM

The Amrita Radiology Information System (RIS) is a state of the art system which simplifies the otherwise complicated task of managing patient scheduling of multiple modalities and managing radiology services. The RIS module can interface with third party PACS systems. Radiology reports are automatically appended to the Amrita EHR. Users can deploy an integrated dictation module or third party systems including outside transcription.

Community providers can submit radiology orders and access results through standard electronic interfaces.



INTEROPERABILITY

Amrita HIS has signed the ONC pledge for interoperability. Our core architecture is based on web services, open source tools, and the ability to create multiple application program interfaces, including a Bidirectional Interface with your Reference Laboratory using standard HL7 interfaces. Our database schema is easily expressed and never hidden from our customers.



PATIENT PORTAL

The Amrita Patient Portal is fully compliant with the requirements of Meaningful Use and the future “advancing care” requirements proposed for Stage 3 certification. The portal provides automatic data feeds from the EHR that are available to patients who have registered and logged in for this service. The portal is an integral component of patient engagement allowing them to review discharge summaries and instructions, access their electronic record and securely communicate with their care team.



MATERIALS/SUPPLY CHAIN MANAGEMENT

Materials Management is integrated into the Amrita HIS, facilitating transition from manual, paper based systems to automated online workflows. Amrita HIS can support facilities of all sizes, be it a critical Access Hospital, a tertiary care hospital, or a teaching hospital. Highly optimized workflows enable issuing, tracking, and managing supply chain of material and drugs through network of stores, including a central store and multiple sub-stores in associated clinics (such as a provider based RHC). Inventory reports and management are automatically updated in real-time.

MM INTERFACES COMPLETELY WITH ALL OTHER AMRITA HIS SYSTEMS. SOME FEATURES INCLUDE:

- INTERFACE WITH CHARGE MASTERS
- INTERFACE WITH FINANCIAL SYSTEMS FOR ACCURATE COST REPORTING
- BILLING CAPTURE
- EXTENSIVE REPORTING
- INTERFACE WITH BARCODING DEVICES
- TRACKING OF EXPIRING DRUGS/ MATERIALS
- COST SAVINGS THROUGH ACCURATE TRACKING AND USAGE OF INVENTORY
- INVENTORY LOCATION MANAGEMENT



USER INTERFACE - USER FRIENDLINESS

The Amrita HIS strives to be as user friendly as possible with easy to read screens as well as reduced number of mouse clicks. Significant thought has been put into the navigation of data fields on our screens to support the most optimum work flow. Additionally, the screen color palate is designed to reduce eye strain and fatigue.

In addition to allowing secure access as a “Bring Your Own Device” configuration, our UI can be modified and changed based upon user preference.



TRACKBIT

Amrita's TrackBit is a low-cost solution using Zigbee wireless protocol for tracking people and equipment campus wide. TrackBit attaches to employee or patient ID badges, sending out RF signals to indicate its presence. Trackbit routers only need power sockets for connecting routers and gateways. Gateways are connected to the local area network, and data is pushed to the tracking application hosted at the central server. TrackMe software provides live updates, graphically representing the movement of device being tracked, plotting each device and its movement live on an interactive terrain. TrackBit acts as the backbone for several process improvements, giving better visibility to management on when, where, and how resources are being used within the entire ecosystem at any point in time.



AMRITA PERSONAL HEALTH RECORD

Launched at the Amrita Institute of Medical Sciences in early 2016, Amrita PHR allows patients to add their own health data as well as automatically receive medical records from participating hospitals, storing both records together offline on their device throughout his/her lifetime, creating a comprehensive record. Also acting as a communication tool, it allows patient health records to be shared internationally in an instant for a user-defined period of time.

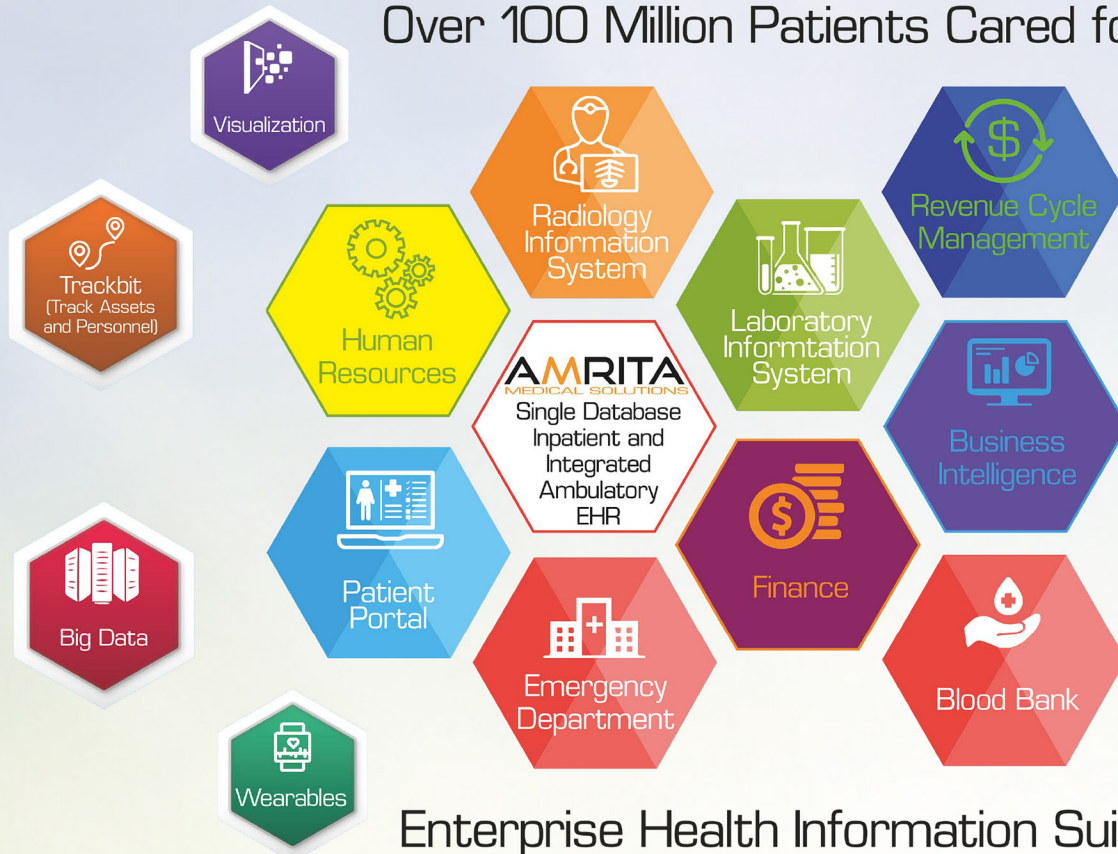
- Automatically receive medical records from participating hospitals
- Support for standard HL7 based Continuity of Care Document (CCD) format
- CCD-based format enables charting and analysis
- PDF-based investigation reports when data is unstructured
- REST-based communication between hospital system and Amrita PHR
- Design based on Blue Button standards
- Easy online sign up and access for Doctors, allowing access to medical records shared by patients
- App available through Google Play and Apple App Store
- Secure access to information



AMRITA

MEDICAL SOLUTIONS

Over 100 Million Patients Cared for



Enterprise Health Information Suite

From 1998- 2001, Amrita HIS Was Developed at AIMS (A 1, 500 Bed Hospital and Research Center) with intense collaboration Between the Development Team and Doctors, Nurses, Pharmacists, Technicians and other Hospital Staff (Including Billing, Finance, Inventory, Logistics)

Healthcare: Amrita has touched over 1000 million lives. Hospitals: AIMS (Primary, Tertiary Care >1500 beds) is ranked 3rd best equipped hospital in India. Disaster Relief services (tsunami, flood etc.) Community Outreach, Cancer Hospice, Elderly Homes

Medical College: School of Medicine, School of Dentistry, School of Nursing, School of Pharmacy, NABH Accredited, ISO Certification

Research Centers for Heart, Cancer, Diabetes and Digestive Diseases, Neurosciences, Plastic & Reconstructive Surgery, Microvascular Surgery, Solid Organ Transplant, Medical Informatics, Telemedicine & Digital Health

Amrita Ventures, LLC
10200 Crow Canyon Road, Castro Valley, CA 94552
www.amritamedical.com